



2014 NATIONAL HUMAN DEVELOPMENT REPORT PAPUA NEW GUINEA

*From Wealth to Wellbeing:
Translating Resource Revenue into Sustainable Human Development*



Download your copy from www.pg.undp.org



*Empowered lives.
Resilient nations.*

4 Purposes of the NHDR:

- 1) Review link: extractive industries & human development;
- 2) Reveal lessons from other countries;
- 3) Highlight innovations from PNG;
- 4) Stimulate, inform and shift the debate in PNG



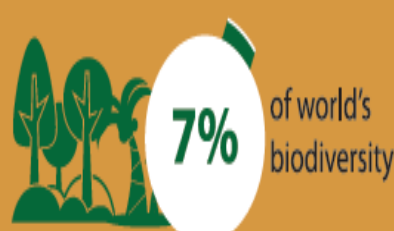
Empowered lives.
Resilient nations.

PNG is rich in natural resources...



PAPUA NEW GUINEA NATURAL RESOURCES:

The country is rich in natural resources, including





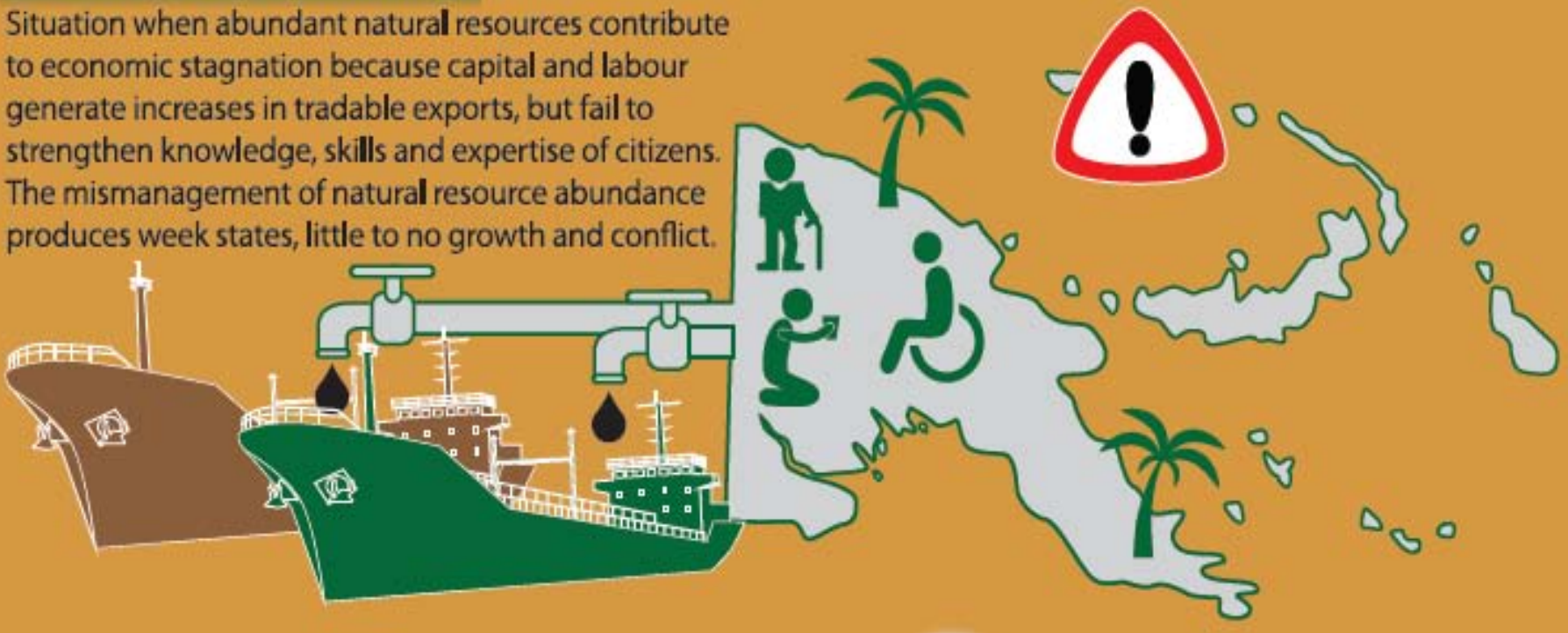
...but resource wealth is not translating into increased opportunities for all citizens



Empowered lives. Resilient nations.

PARADOX OF PLENTY:

Situation when abundant natural resources contribute to economic stagnation because capital and labour generate increases in tradable exports, but fail to strengthen knowledge, skills and expertise of citizens. The mismanagement of natural resource abundance produces weak states, little to no growth and conflict.





Despite some measurable improvements in human development, many indicators, including levels of hardship and inequalities, have shown less positive progress during the last 15 years...



Empowered lives.
Resilient nations.

25%
of children are not attending schools



PNG ranks in the bottom ten countries of the gender inequality index with estimated two out of three women having experienced gender-based violence

Almost 40%



Almost 40% of the country's population lives on less than one dollar per day



In the 2013 Global Human Development Index, Papua New Guinea ranks

156 out of 187
(level of low human development)

Papua New Guinea is unlikely to meet any of the internationally agreed Millennium Development Goals by 2015

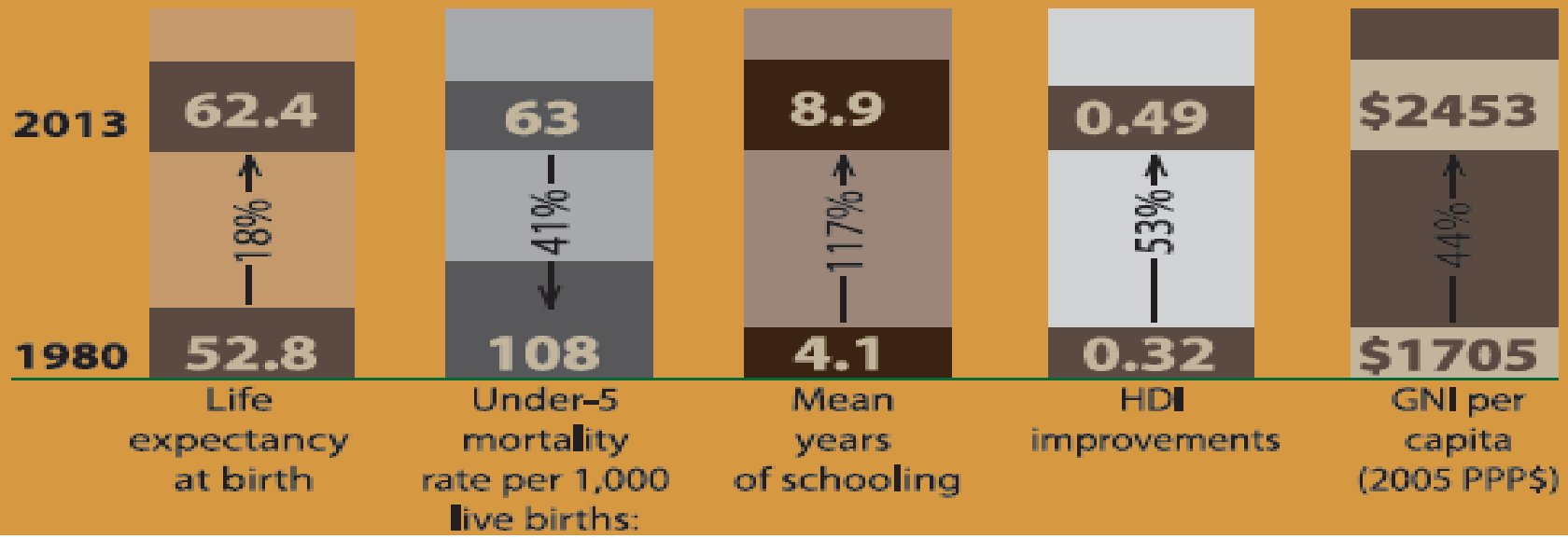


Extractive sector contributed positively to development through revenue generation allowing for cutting edge policy innovations that enhanced levels of social sector investments...



Empowered lives.
Resilient nations.

SOCIAL INDICATORS OF PAPUA NEW GUINEA⁷





POLICY OPTIONS FOR SUSTAINABLE EXTRACTIVE INDUSTRIES IN PAPUA NEW GUINEA



*Empowered lives.
Resilient nations.*

1. LEGAL, INSTITUTIONAL & POLICY FRAMEWORKS

2. PRUDENT REVENUE COLLECTION AND MANAGEMENT

3. PEOPLE-CENTERED EXPLORATION AND EXTRACTION

4. INVESTMENT IN HUMAN, PHYSICAL, FINANCIAL, SOCIAL CAPITAL



*Empowered lives.
Resilient nations.*

Policy Options for National Government

- Improve service delivery & identify areas of ‘highest rate of return’
- Review costs/benefits of state & shared mineral ownership
- Establish formal grievance mechanisms, e.g. Mining Ombudsman
- Better revenue transparency & accountability (EITI etc.)
- Diversify assets (agriculture, eco-tourism, science & industry)
- Institutionalize companies’ minimum spending on community dev.



*Empowered lives.
Resilient nations.*

Policy Options for Sub-National Governments

- **Integrate SIPs with planning & accountability mechanisms**
- **Institutionalize representation of marginalized groups in all stages of negotiation and development processes;**
- **Refine mechanisms of benefit distribution**



*Empowered lives.
Resilient nations.*

Policy Options for Private Sector Companies

- Encourage consultations with local communities at all stages of development
- Undertake social mapping to identify marginalized groups
- Ensure accurate & timely data collection and impact monitoring
- Establish biodiversity offset programmes



*Empowered lives.
Resilient nations.*

Policy Options for Civil Society Organizations

- Engage marginalized groups in community decision-making processes and benefit distribution
- Continue to support service delivery
- Advocate for & support better environmental management
- Act as ‘watchdog’ for better transparency and accountability



*Empowered lives.
Resilient nations.*

Policy Options for International Development Partners

- **Stimulate and inform debate**
- **Facilitate multi-stakeholder dialogue and collaboration**
- **Provide international good experience**
- **Strengthen results-based community development**



*Empowered lives.
Resilient nations.*

**Timely actions
of ALL
stakeholders**

**Unique
window of
opportunity to
make well-
informed
decisions**

**PNG needs to
grasp
opportunity
now and not
repeat
mistakes**

Report is only as good as the action that follows.....



Empowered lives.
Resilient nations.

1. MDG Progress Report and localization of SDGs

- ❖ GoPNG request to help with a ‘final MDG progress report’ to
 - ✓ Present an MDG & human development profile at national, provincial and district level;
 - ✓ Provide lessons learned, challenges and opportunities;
 - ✓ Prepare the localization of the SDG targets;
 - ✓ Be presented to Parliament & UN General Assembly



Empowered lives.
Resilient nations.

2. Corporate Social Responsibility (CSR) mapping

- ❖ Long CSR history, with activities around K500 million, yet often done in a piecemeal approach
- ❖ With Business Council of PNG and DNPM, UNDP is conducting a **mapping exercise** on business engagement in post-2015:
 - Who, what, where?
 - Inform decision-making;
 - Link CSR activities to national development priorities;
 - Foster partnerships: Government, DPs & Private Sector



3. Other work with the private sector....



*Empowered lives.
Resilient nations.*

- ❖ Pacific Financial Inclusion Programme (PFIP);
- ❖ Kumul Game Changers;
- ❖ Solar Mama Initiative;
- ❖ Design of Renewable Energy Project.



*Empowered lives.
Resilient nations.*

Thank you!